

Case Study

Industrial Energy Efficiency

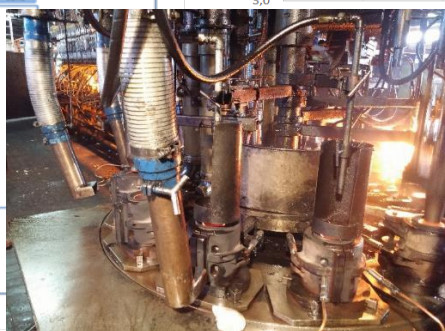
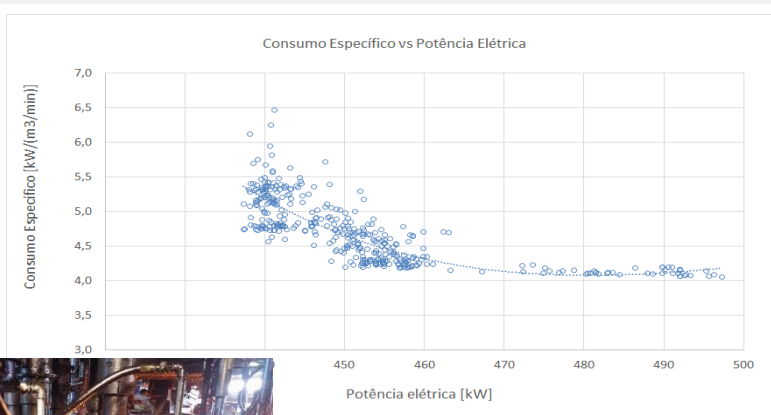
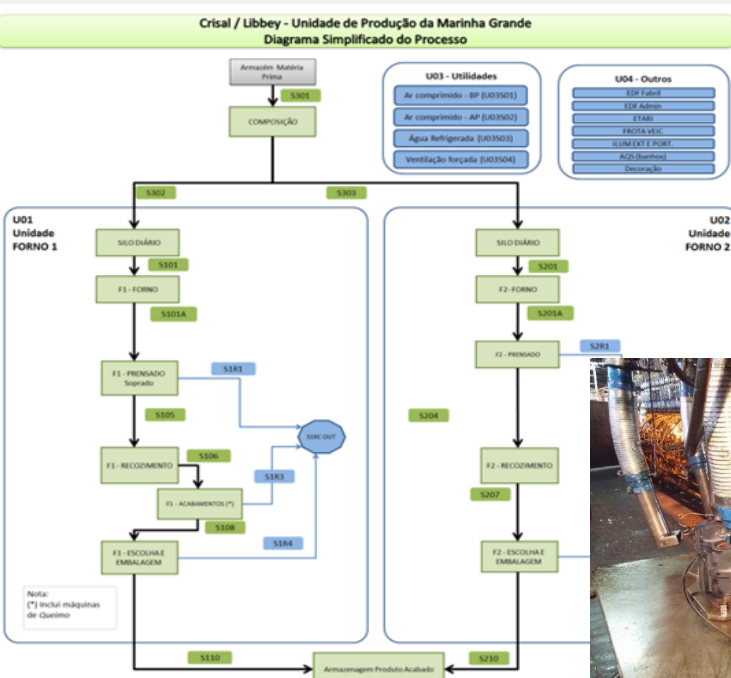


Sector: X Industry	Large Buildings	Infraestruturas	Small buildings / residential
Subsector: Glass			Year: 2014
Client: Crisal / Libbey			Implementation (months): 3
Location: Marinha Grande / Portugal			Performance Contract (yrs): N/A
Type of Contract: Energy Audit			

Project description:

For the second time, EWEN was invited to perform an energy audit of the Crisal (Libbey Group / USA) glass container plant in Portugal. Ewen had already performed the previous audit in 2009.

All the utilities as well as the manufacturing processes were analysed. A large number of field measurements were collected, including electric energy, natural gas and thermography.



Project results:

A significant number of efficiency measures were recommended, representing a potential reduction of energy consumption in excess of 6%. In addition, a measure not related to energy consumption or cost reduction was recommended, since it enabled a significant reduction of operating costs.