

Case Study

Industrial Energy Efficiency

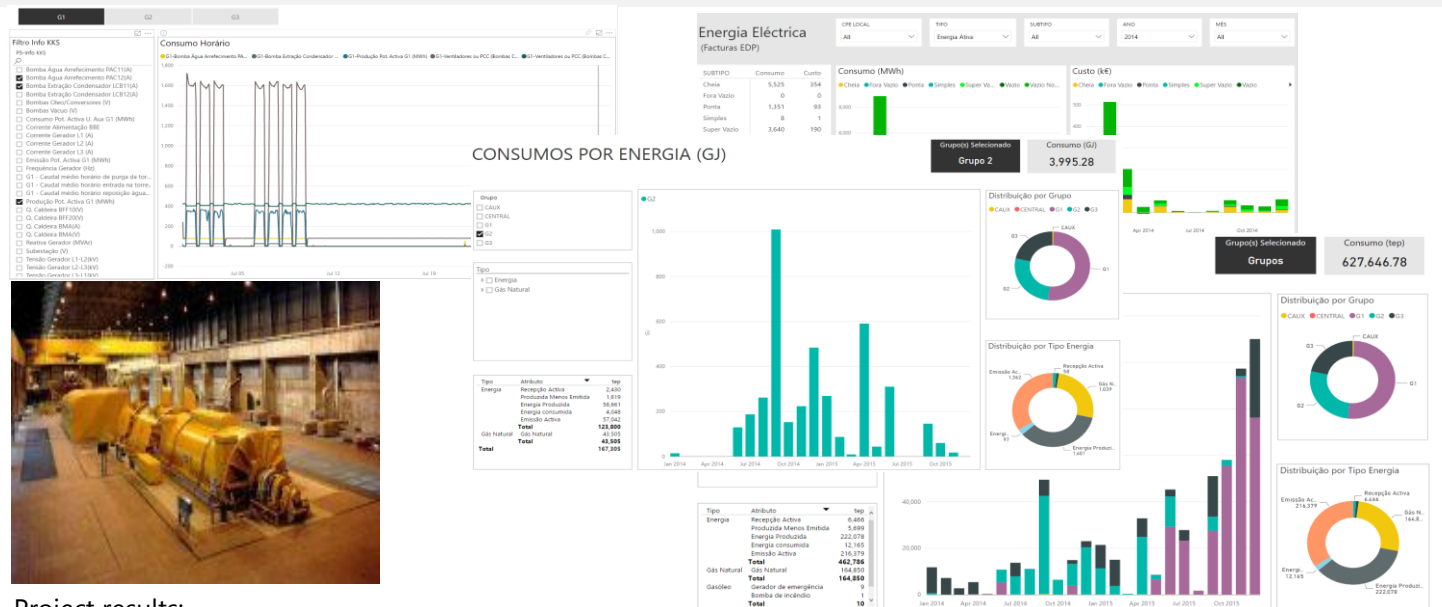


Sector:	<input type="checkbox"/> Industry	<input type="checkbox"/> Large Buildings	<input checked="" type="checkbox"/> Infraestruturas	<input type="checkbox"/> Retailing / Services
Subsector:	Power Plants			Year: 2016
Client:	EDP (Energy Distributor)			Implementation (months): 6
Location:	Portugal (Lares, Ribatejo, Sines)			Performance Contract (years): N/A
Type of Contract:	Energy Audit			

Project description:
 EWEN was awarded by EDP (the largest electricity distributor in Portugal) the execution of energy audits of 3 Thermal Power Stations to EWEN:

- » Ribatejo (3 * 392MW);
- » Lares (2 * 430MW);
- » Sines (4 * 314MW)

EWEN's work focused on all auxiliary systems, including in some cases, the impacts of the efficiency measures, on the plant's Thermodynamic Cycle's efficiency.
 Where possible, data from the plant's Scada system was obtained and analysed during the audit, allowing EWEN to support most of the recommended measures, with with a solid quantitative analysis.



Project results:

A set of energy efficiency measures was recommended by EWEN, having in account, the current low load regime under which these plants currently operate.